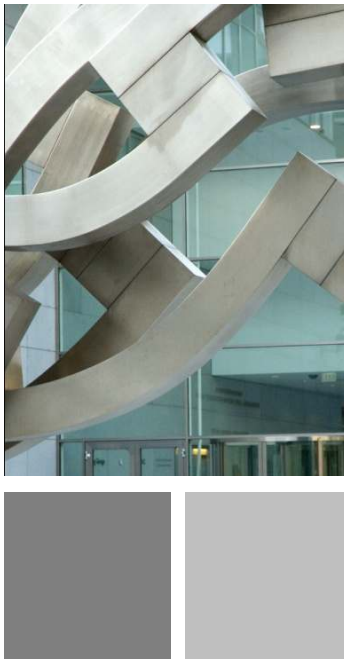


About NAI Indonesia

NAI Indonesia is a part of NAI Global. We work together to help our clients strategically optimize their real estate assets. One of our points of difference is that we move with the efficiency and flexibility of a strong but nimble organization. As you'll discover when you meet our professionals, engaging NAI is an easy, personal experience. We take the time to get to know each client in depth, to understand your strategy, requirements and financial objectives, learn the details of the property or portfolio and measure the dynamics of the marketplace. When you do business with NAI, you connect with the best people.



Core Values

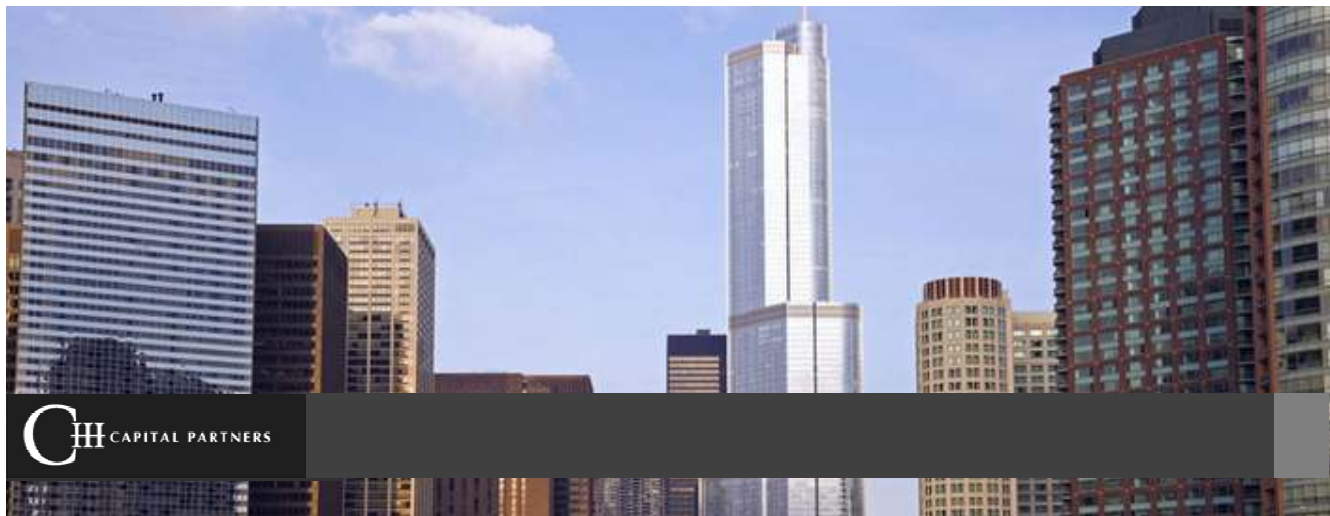
NAI Global is uniquely structured to better serve our clients:

- We put our clients first
- We deal with the highest level of trust, respect, fairness and integrity
- We are committed to quality and continuous improvement
- We are empowered by sharing, communicating and collaborating
- We are dynamic and innovative
- We are leaders and teammates
- We are global in our thinking, yet local in our approach
- We embrace change and are passionate in our initiatives
- We strive to provide the most challenging, stimulating, enjoyable and rewarding environment

NAI consistently ranks highly among our competition. Within the last 5 years some of our honors include:

- #1** Global CRE Provider (based on coverage by # of Offices)
- #1** Network (based on performance) - Watkins Research Corporate Real Estate Service Providers Survey
- #1** Global Broker of the Year – Private Equity Real Estate Magazine
- #1** Based on Total CCIMs and SIORs
- #1** Instructor of the Year 2008-2010 (SIOR)
- #1** NAIOP Property Management Firm of the Year (based on HAI Hiffman's leadership in the category)
- #2** Overall Corporate Services Provider - Watkins Research Corporate Real Estate Service Providers Survey
- #2** Network (based on transaction volume) - Commercial Property News Magazine
- #3** Brokerage Organization - Real Estate Forum's Forum 100
- Top 5** Brokerage Organization - National Real Estate Investor Magazine
- Top 5** Real Estate Brand - Lipsey Co. Top 25 Real Estate Brands
- Top 10** Property Managers - National Real Estate Investor Magazine

About C-III Capital Partners



NAI Global, the largest network of independent commercial real estate firms worldwide, announced that its previously reported acquisition by C-III Capital Partners LLC (C-III) has been completed. The transaction will help create a leading fully integrated commercial property services company that will operate in markets around the world.

C-III is a leading commercial real estate service company engaged in a broad range of activities, including primary and special loan servicing, loan origination, fund management, CDO management, principal investment, title services and multifamily property management. C-III is led by CEO Andrew L. Farkas, who founded and was Chairman and CEO of Insignia Financial Group, Inc. (NYSE:IFS). Its principal place of business is located in Irving, TX, and it has additional offices in New York, New York;

Greenville, South Carolina; McLean, Virginia; Chicago, Illinois; Dallas, Texas and Nashville, Tennessee.

NAI Global will continue to operate as a separate company under its current management. C-III will accelerate NAI Global's growth by exploring business development opportunities in strategic locations, including New York, London, Singapore and other primary global business centers. It will also invest in the growth of the corporate solutions and capital markets offering, expanding asset/property management, project/facilities management and valuation services worldwide.

Our Services



Property Management

Asset Management
Property Management Audit

Facility Management

Engineering Services

Design Review
Technical Quality Assurance
Construction Management
M & E Audit
Energy Management / Audit
Testing Commissioning
Engineering Outsourcing

Marcomm

Marcomm Management
Marcomm Consultancy

Consultancy

Highest & Best Use Analysis
Market Research
Development/ Build-to-Suite
Investment Sales & Advisory

Marketing Consultancy Services

Leasing Agency

Lease Audit/ Administration
Tenant Representation

Valuation

Information Technology Services

Our People



Stephen E. Atherton

Managing director Asia Pacific & Middle East NAI Global

Steve Atherton is a commercial property services specialist with more than 25 years experience, including 15 years in the Asia Pacific region. Recently relocated to Singapore, the Asia Pacific regional headquarters for NAI Global, he is responsible for relationship development with local and multinational corporate clients, institutional investors and expansion of the NAI Global offices in the Asia Pacific region.

Over the past 8 years, Mr. Atherton has expanded the NAI Asia Pacific coverage to 30 major cities with the best independent, entrepreneurial commercial property services companies in each market. Significant time and resources have been invested in standardized corporate real estate training programs as well as standardized systems and processes for conducting business across Asia, which has enabled the NAI Asia team to provide seamless services across the region.

Our People



Hendrik Joewono

President Director NAI Indonesia

Hendrik Joewono is President Director of NAI Indonesia.

Mr. Joewono has more than thirty years of varied commercial experience in the property business. He is also experienced in managing and operating a variety of building types including office, residential and retail. With his experience he is strongly positioned to help his client in maintain and improve their assets. In work, he always put the client as first priority.



Nengah Lukman

Director NAI Indonesia

Nengah Lukman is one of the Director of NAI Indonesia. He has more than twenty years of experience in the property. He participates in the overall corporate planning of the organization. Lukman works on operational where he has proven his ability. He works closely with all managers to achieve the goals and to continuously develops, implements systems, accountability and higher standards of excellence.



Loe Siswanto Sugiarto

Director NAI Indonesia

Siswanto Sugiarto is responsible for directing the company's marketing, public relations and corporate communications activities. Siswanto has more than 10 years of business-to-business marketing and communications experience in the property industry. In handling his work, he always maintains a good relationship with the client.

Our People



Bernanto Soerojo

Director NAI Indonesia

Bernanto has over 25 year of professional experience in various business and property services ranging Industrial, security product and various property services from engineering audit, energy audit up to property management and facility management for various property development from integrated mixed use development, office, shopping centre, apartments, banks and industrial estate.

Prior to joining NAI Indonesia, Bernanto spent 8,5 years in UGL Premas / PT. Premas International with his last appointment as Resident Director with main responsibility to manage overall business and ensure business growth with developing wide range of services and become market leader for M&E Audit, Construction Management for M&R, Energy Audit and Management.

Major corporate client such as Agung Podomoro Group, Agung Sedayu Group, Pakuwon Group, Bakrie Group, Citibank, Bank Permata and Bahama Group are client that see the benefit to the services been develop by Bernanto. Been expose directly to clients did enrich Bernanto capability from setting up operation up to running the property management and ensuring business achievement.



Richie Jo

Associate Director NAI Indonesia

Richie Jo is the head of Engineering Services Department of NAI Indonesia. He has over 20 years of professional experience in the field of plant & machinery and real and personal property valuations and engineering services. His assessment expertise in the field of plant & machinery is highly diverse and extensive which covers large industrial machinery, high rise building machineries, hotel machineries, chemical plant, telecommunication system, cargo container ship, passenger aircraft, heavy equipments, and motor.

Property Management Services



NAI Global Offices



Asia Pacific

Australia, China, Guam, Hong Kong, **Indonesia**, India, Japan, Malaysia, New Zealand*, Philippines, Singapore, South Korea, Taiwan, Thailand, Vietnam*

Canada

Alberta, British Columbia, Manitoba*, New Brunswick, *Nova Scotia, Ontario, Quebec, Saskatchewan*

Europe, Middle East and Africa

Austria, Belgium*, Bulgaria, Czech Republic, Denmark, Estonia, Finland, France, Germany, Greece, Hungary, Iceland, Ireland*, Italy*, Kazakhstan, Kuwait, Latvia, Lithuania, Netherlands*, Norway, Poland*, Portugal*, Qatar, Romania, Russia, Serbia, South Africa, Spain, Sweden, Switzerland, Turkey, United Arab Emirates*, Ukraine, United Kingdom

Latin America and the Caribbean

Argentina, Bahamas, Bolivia, Brazil, Chile, Colombia*, Costa Rica, Ecuador, El Salvador*, Guatemala, Mexico, Panama, Paraguay, Peru, Puerto Rico*, The Caribbean, Uruguay, Venezuela

United States

Alabama, Arizona, Arkansas, California, Colorado, Connecticut, Delaware, District of Columbia, Florida, Georgia, Guam, Hawaii, Idaho, Illinois, Indiana, Iowa, Kansas, Kentucky, Louisiana, Maine, Maryland, Massachusetts, Michigan, Minnesota, Mississippi, Missouri, Montana, Nebraska, Nevada, New Hampshire, New Jersey, New Mexico, New York, North Carolina, North Dakota, Ohio, Oklahoma, Oregon, Pennsylvania, Rhode Island, South Carolina, South Dakota, Tennessee, Texas, Utah, Vermont, Virginia, Washington, Wisconsin, Wyoming

Over 350 offices in 55 countries. 5.000 professionals

Corporate Clients



Representative Clients

Gillette

FMC
FMC Corporation

**UNITED STATES
POSTAL SERVICE**

**BLACK &
DECKER**

**CON-WAY
LOGISTICS**

THE PEPSI BOTTLING GROUP

MOTOROLA

hp

**DERMODY
PROPERTIES**

GENERAL TIRE

Carrefour

bp

**ASSOCIATED
PACKAGING
INC.**

BEST BUY

**ROADWAY
Express**

ABN-AMRO

DOW JONES

IR

HTI

Henkel

DIEBOLD
We won't rest.

HAYWORTH

GRAINGER

ups

Potlatch

tyco

SANYO

**LIBERTY
PROPERTY TRUST**

RREEF
Real Estate Investment Managers

**THE HOME
DEPOT**

INTERNATIONAL PAPER

SIEMENS

**PROGRESS
SOFTWARE
BUSINESS ALLIANCE**

Cummins

Cadbury Schweppes

Walgreens
DRUG STORES

**BRIDGESTONE
Firestone**

BOMBARDIER

ProLogis
The Global Distribution Solution

Genco

IKEA

SLS
SEARS LOGISTICS
SERVICES, INC.

PGW
Publishers
Group
West

Steelcase

**AVERY
DENNISON**

COOPER

BOSE

NAI Indonesia

Commercial Real Estate Services, Worldwide.

www.naiindonesia.com

NAI Global

Commercial Real Estate Services, Worldwide.

Long-Term Relationships Clients



Valuation of Latin America Portfolio; Disposition of Assets in Puerto Rico, Turkey and India



Retail Locations, Warehouse/Distributor \$165 Million



18 Years of Continuous Service; Preferred Provider Airport / City Locations \$80 Million



18 Years of Continuous Service; 200 Transactions Completed



9 Years of Continuous Service; \$170 Million in Services and Transactions Completed



Exclusive National Site / Branch Acquisitions



12 Years of Continuous Service; \$520 Million of Projects Completed



Acquisitions and Dispositions throughout the U.S.



20 Years of Continuous Service



16 Auctions Completed \$20 Million



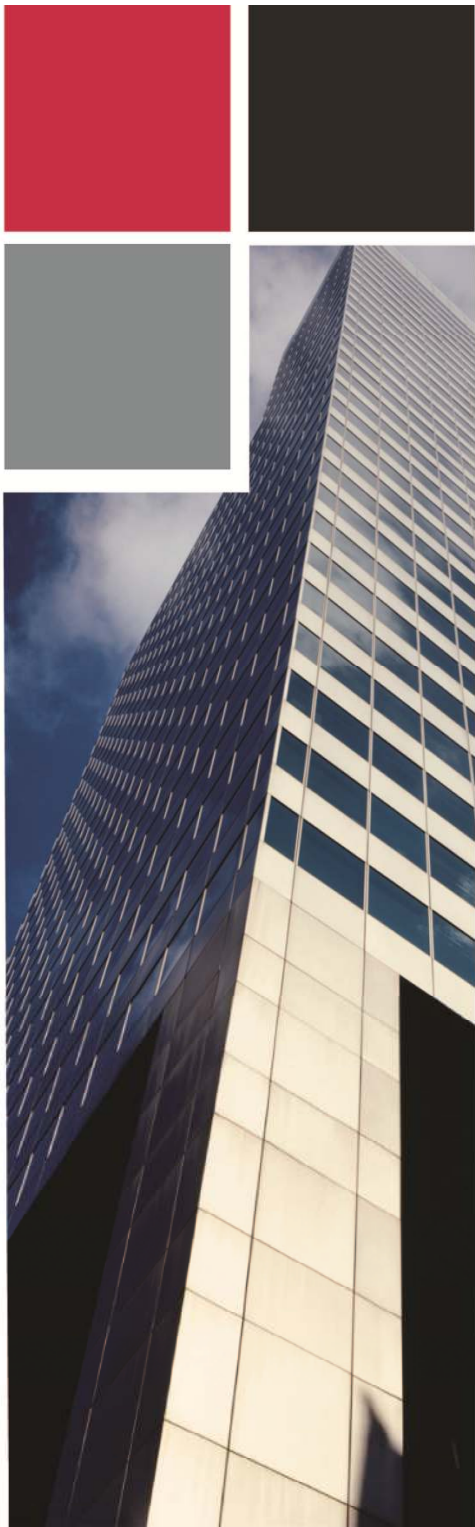
Sale of HQ, Arlington, VA; Initial Sale of over \$300 Million in Assets & Leasehold Savings in Excess of \$150 Million



10 Years of Continuous Service
100 assignments completed
\$27 Million



169 transactions completed in 30 countries



For more information, contact:

Siswanto Sugiarto
Director

NAI Indonesia

Menara Palma 22nd Floor unit 22-01
Jl. HR.Rasuna Said Blok X-2 Kav.6
Jakarta 12950, Indonesia

Phone +6221 579 57 599

Fax +6221 579 57 600

Email siswantosugiarto@naiindonesia.com